

ETU-LINK
易天·光通信

SFP / SFP+ / SFP28 / QSFP+
QSFP28 / QSFPDD

125G Module Series		Media Converter Series	
Model	Part Number	Model	Part Number
125G QSFP28	ETU-125G-QSFP28-001	10G SFP+ to 125G QSFP28	ETU-125G-MC-001
125G QSFP28	ETU-125G-QSFP28-002	10G SFP+ to 125G QSFP28	ETU-125G-MC-002
125G QSFP28	ETU-125G-QSFP28-003	10G SFP+ to 125G QSFP28	ETU-125G-MC-003
125G QSFP28	ETU-125G-QSFP28-004	10G SFP+ to 125G QSFP28	ETU-125G-MC-004
125G QSFP28	ETU-125G-QSFP28-005	10G SFP+ to 125G QSFP28	ETU-125G-MC-005
125G QSFP28	ETU-125G-QSFP28-006	10G SFP+ to 125G QSFP28	ETU-125G-MC-006
125G QSFP28	ETU-125G-QSFP28-007	10G SFP+ to 125G QSFP28	ETU-125G-MC-007
125G QSFP28	ETU-125G-QSFP28-008	10G SFP+ to 125G QSFP28	ETU-125G-MC-008
125G QSFP28	ETU-125G-QSFP28-009	10G SFP+ to 125G QSFP28	ETU-125G-MC-009
125G QSFP28	ETU-125G-QSFP28-010	10G SFP+ to 125G QSFP28	ETU-125G-MC-010
125G QSFP28	ETU-125G-QSFP28-011	10G SFP+ to 125G QSFP28	ETU-125G-MC-011
125G QSFP28	ETU-125G-QSFP28-012	10G SFP+ to 125G QSFP28	ETU-125G-MC-012
125G QSFP28	ETU-125G-QSFP28-013	10G SFP+ to 125G QSFP28	ETU-125G-MC-013
125G QSFP28	ETU-125G-QSFP28-014	10G SFP+ to 125G QSFP28	ETU-125G-MC-014
125G QSFP28	ETU-125G-QSFP28-015	10G SFP+ to 125G QSFP28	ETU-125G-MC-015
125G QSFP28	ETU-125G-QSFP28-016	10G SFP+ to 125G QSFP28	ETU-125G-MC-016
125G QSFP28	ETU-125G-QSFP28-017	10G SFP+ to 125G QSFP28	ETU-125G-MC-017
125G QSFP28	ETU-125G-QSFP28-018	10G SFP+ to 125G QSFP28	ETU-125G-MC-018
125G QSFP28	ETU-125G-QSFP28-019	10G SFP+ to 125G QSFP28	ETU-125G-MC-019
125G QSFP28	ETU-125G-QSFP28-020	10G SFP+ to 125G QSFP28	ETU-125G-MC-020

100G Module Series		Media Converter Series	
Model	Part Number	Model	Part Number
100G QSFP28	ETU-100G-QSFP28-001	10G SFP+ to 100G QSFP28	ETU-100G-MC-001
100G QSFP28	ETU-100G-QSFP28-002	10G SFP+ to 100G QSFP28	ETU-100G-MC-002
100G QSFP28	ETU-100G-QSFP28-003	10G SFP+ to 100G QSFP28	ETU-100G-MC-003
100G QSFP28	ETU-100G-QSFP28-004	10G SFP+ to 100G QSFP28	ETU-100G-MC-004
100G QSFP28	ETU-100G-QSFP28-005	10G SFP+ to 100G QSFP28	ETU-100G-MC-005
100G QSFP28	ETU-100G-QSFP28-006	10G SFP+ to 100G QSFP28	ETU-100G-MC-006
100G QSFP28	ETU-100G-QSFP28-007	10G SFP+ to 100G QSFP28	ETU-100G-MC-007
100G QSFP28	ETU-100G-QSFP28-008	10G SFP+ to 100G QSFP28	ETU-100G-MC-008
100G QSFP28	ETU-100G-QSFP28-009	10G SFP+ to 100G QSFP28	ETU-100G-MC-009
100G QSFP28	ETU-100G-QSFP28-010	10G SFP+ to 100G QSFP28	ETU-100G-MC-010
100G QSFP28	ETU-100G-QSFP28-011	10G SFP+ to 100G QSFP28	ETU-100G-MC-011
100G QSFP28	ETU-100G-QSFP28-012	10G SFP+ to 100G QSFP28	ETU-100G-MC-012
100G QSFP28	ETU-100G-QSFP28-013	10G SFP+ to 100G QSFP28	ETU-100G-MC-013
100G QSFP28	ETU-100G-QSFP28-014	10G SFP+ to 100G QSFP28	ETU-100G-MC-014
100G QSFP28	ETU-100G-QSFP28-015	10G SFP+ to 100G QSFP28	ETU-100G-MC-015
100G QSFP28	ETU-100G-QSFP28-016	10G SFP+ to 100G QSFP28	ETU-100G-MC-016
100G QSFP28	ETU-100G-QSFP28-017	10G SFP+ to 100G QSFP28	ETU-100G-MC-017
100G QSFP28	ETU-100G-QSFP28-018	10G SFP+ to 100G QSFP28	ETU-100G-MC-018
100G QSFP28	ETU-100G-QSFP28-019	10G SFP+ to 100G QSFP28	ETU-100G-MC-019
100G QSFP28	ETU-100G-QSFP28-020	10G SFP+ to 100G QSFP28	ETU-100G-MC-020

CONTENTS



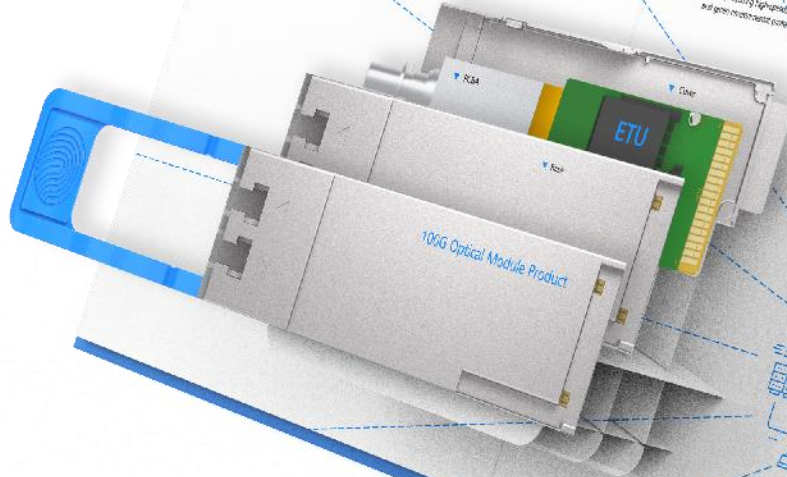
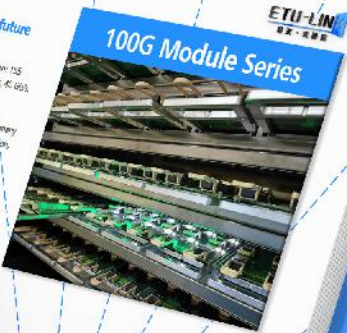
01	100G QSFP28
03	Introduction Of ETU
	Exhibition
05	Connection
07	Copper-T PON
09	DAC/AOC
11	Patch cord Media converter
13	Process of Testing
16	Service Team
17	

ETU-LIN
易天·光通信

The development history and future prospects of optical modules

The main types of optical module speeds from 10G to 40G, 100G, 200G, and 400G, up to 100G, 200G, 400G, and 800G.

The development trend of optical modules is to be more reliable, more energy-saving, more high-speed, high-capacity, and more multi-wavelength.



INTRODUCTION OF ETU

ETU-LINK Technology Co., Ltd. was established in 2012, focusing on developing optical network modules for data centers and telecom operators.

Consistent efforts in R&D and advanced production processes to ensure excellent performance and higher reliability have earned us a strong reputation in the market. Our products are widely used in 40G, 100G and 200G data centers, and we are committed to providing our customers with the most reliable and high-quality products.

ETU-LINK has been awarded the most advanced customer requirements award by the industry for its excellent performance. The awarding ceremony was held in the United States, and ETU-LINK was highly praised for its outstanding performance.

The ETU-LINK team has a strong background in the optical network field, and we are committed to providing our customers with the most reliable and high-quality products.

Let's visit the ETU family together!



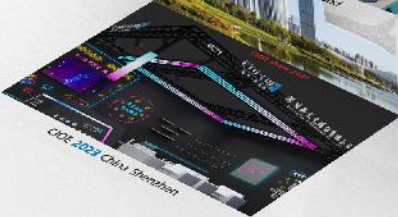
OPTICAL MODULE





EXHIBITION

CTO 是企业的灵魂人物，是企业发展的关键。CTO 需要具备丰富的行业经验、深厚的技术功底、卓越的战略眼光和强大的沟通能力。CTO 的职责包括制定企业技术战略、推动技术创新、管理研发团队、提升企业运营效率等。CTO 是企业发展的核心驱动力，是企业竞争力的重要保障。



CIOE 2023 China Shenzhen



ETU-LINK
翼天·光通信

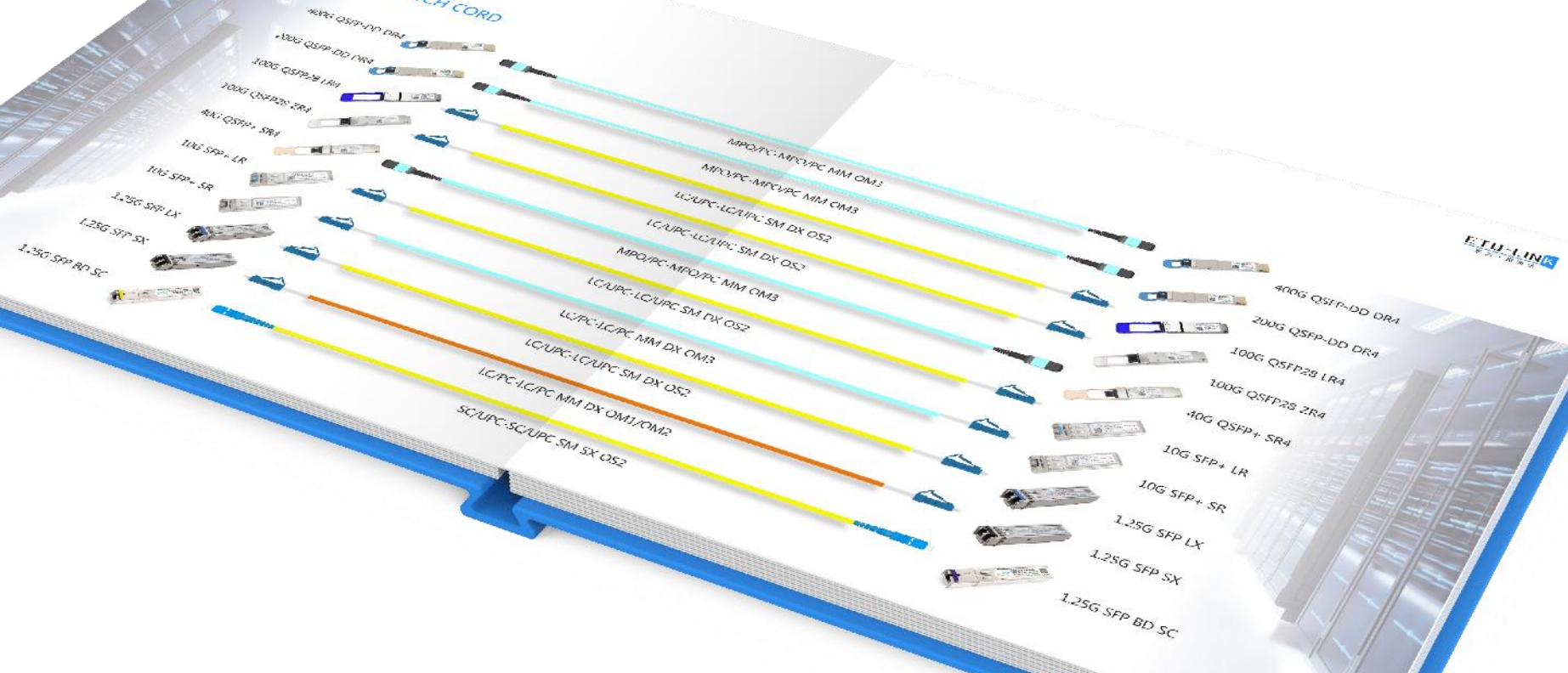


ICT Comm 2023 Vietnam

ETU-LINK
翼天·光通信

EXHIBITION
03 / 06

CONNECTION TRANSCEIVERS+ PATCH CORD



COPPER-T/PON

ETU-LINK
光网先锋



ES-T1-R
1000M SFP RJ45 100m



ES-T3-R
10G SFP+ RJ45 30m



ES-T2-R
10/100/1000M SFP
RJ45 100m



ES-T5-R-1
10G SFP+ RJ45 30m



ES-T3-R
10/100M SFP
RJ45 100m



ES-T5-R
10G SFP+ RJ45 30m



EPON ONU PX20+



EPON OLT C-



EPON OLT PX20++



EPON OLT C+



EPON OLT PX20+++



COPPER-T/PON



ES-T1-R
1000M SFP RJ45 100m



ES-T2-R
10/100/1000M SFP
RJ45 100m



ES-T3-R
10/100M SFP
RJ45 100m



ES-T5-R
10G SFP+ RJ45 30m



ES-T5-R-1
10G SFP+ RJ45 30m



ES-T6-R
10G SFP+ RJ45 80m



GPON ONU B+



GPON OLT C+



GPON OLT C++



EPON ONU PX20+

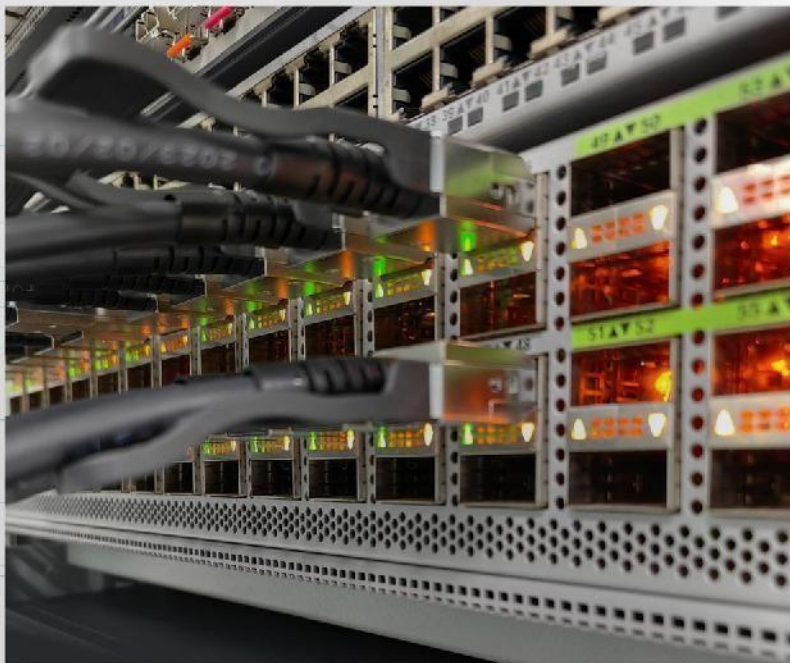


EPON OLT PX20++



EPON OLT PX20+++

DAC/AOC



ETU-LINK
易天·光通信

ETU-LINK
易天·光通信



DAC



PATCH CORD

Type

Connector

Color

Cable Diameter

Core

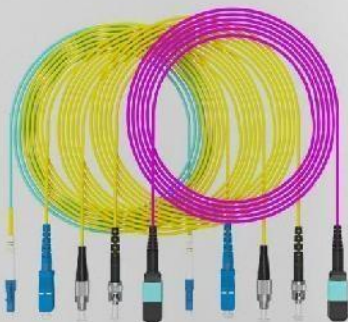
Surface

Cable Material

Length



OS2, OM1, OM2, OM3, OM4 and etc.



MEDIA CONVERTER

ETU-LINK
聚天·芯通讯



PATCH CORD

Type

Connector

Color

Cable Diameter

Core

Surface

Cable Material

Length



OS2, OM3, OM4, OM5, OM6 and etc.

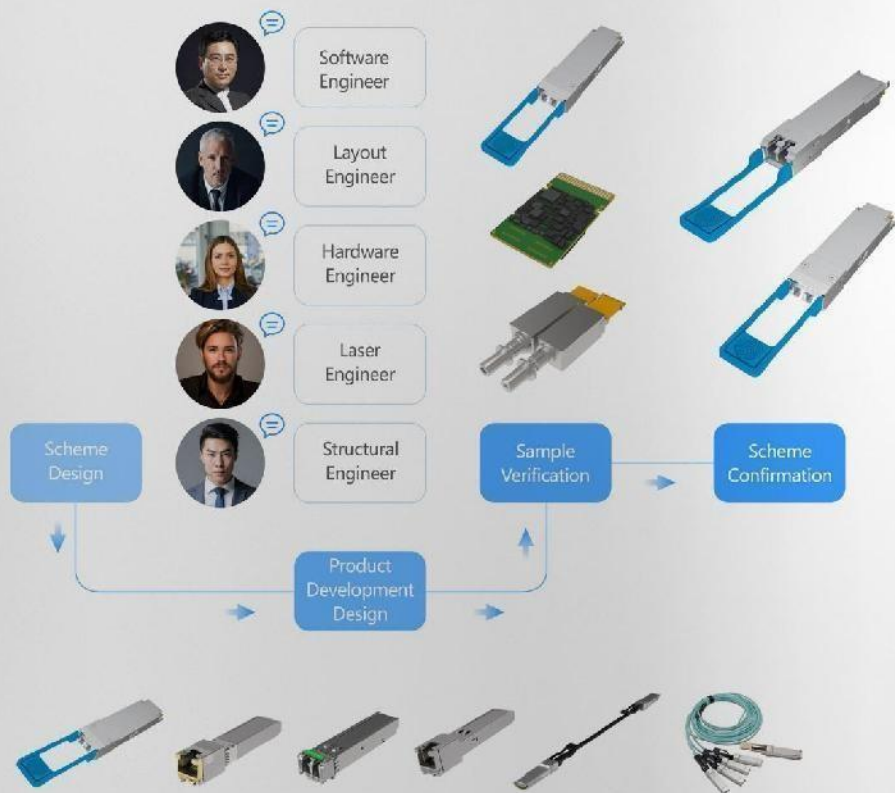


MEDIA CONVERTER

ETU-LINK
光·电·互联



R&D TEAM



PROCESS OF TESTING



SERVICE TEAM

